



£450,000 Offers Over

Park Range, Manchester M14 5HQ

Semi-Detached House | 4 Bedrooms | 1 Bathroom



Step Inside

Key Features

- 4 spacious Double Bedrooms
- 2 Living Rooms
- 1 Bathroom
- 1 WC
- Exclusive Large Rear Garden
- Front Garden

Main Particulars

We are proud to bring you this beautifully renovated and exceptionally well-maintained 4-bedroom semi-detached house in one of the most sought-after and desirable parts of south Manchester.

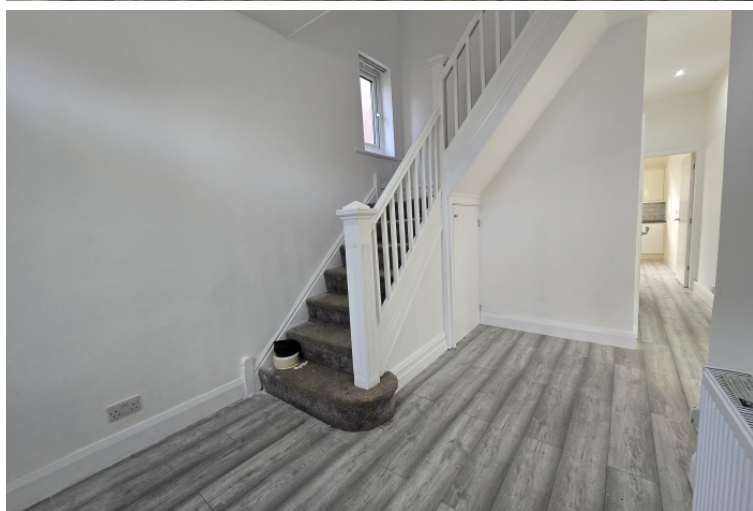
This newly renovated, beautiful house flaunts four spacious bedrooms, two spacious and accommodating living rooms, and a colossal kitchen fully equipped with state-of-the-art appliances and an elegant ambience created by fixtures and fittings of the highest standard and quality that will leave any chef in awe of the wonderful cooking experience.

The property welcomes you with an exclusive and spacious front garden which allows access to the main door. The main entrance bifurcates into the modern open living room and stairs leading to the first floor, the contemporary stylish living room boasts an eye-catching elegant bay window that gives life and texture to the living room, spacious and accommodating be it an intimate night-in with your loved ones or those big family gatherings on special occasions.

The living room leads into the kitchen which affords you the luxury of utilizing it as a fully functioning kitchen and a breakfast room, with a separate utility room the efficient utilization of space guarantees all your cooking needs in one place with ample room for mobility and a dining table. After the kitchen is the rear garden, perfect for lighting up the grill on a warm summer day or a cosy fire on a cold winter's night with a very generous amount of square footage and exclusivity it is a promising prospect for enjoying time with friends and family.

The first floor comprises three bedrooms and a bathroom, the well-planned bathroom with the highest standard of fittings is an expression of grace with its tiled walls and soothing colour tones it is a spectacle to behold. All four bedrooms are the epitome of efficient space utilization, the master bedroom overlooks the driveway with west-facing windows and gives an exquisite view of the surrounding greenery, and the second bedroom with the windows overlooking the rear courtyard gives a mesmerizing view of the sunset promising peace and tranquillity.

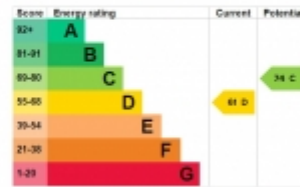
This property truly has a rare potential not possessed by many houses, it can be moved into and made to be your own with very little to no work required and serves as the perfect living space worthy of being called home.



Energy rating and score

This property's energy rating is D. It has the potential to be C.

[See how to improve this property's energy efficiency](#)



The graph shows this property's current and potential energy rating.

Telephone: 0161 248 4585

Email: info@buraqestates.co.uk



www.buraqestates.co.uk